



Know-how in food processing!

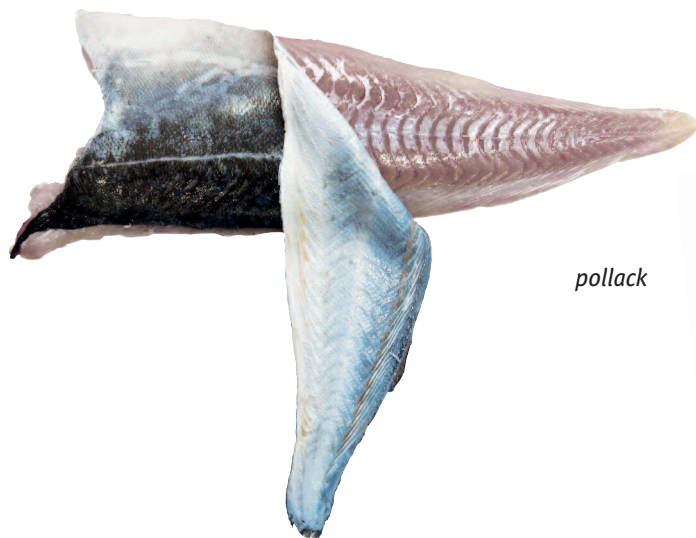


Cortex CBF 496 HA

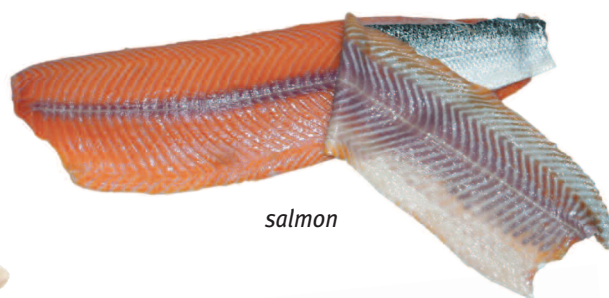
**The fish skinning machine with
innovative pressure conveyor**

NOCK Cortex CBF 496 HA

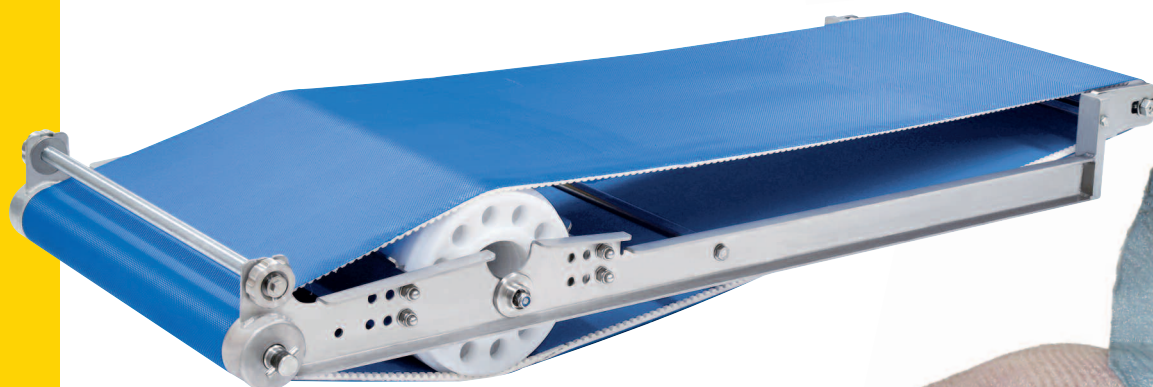
NOCK MULTI-DISC® upper pressure belt



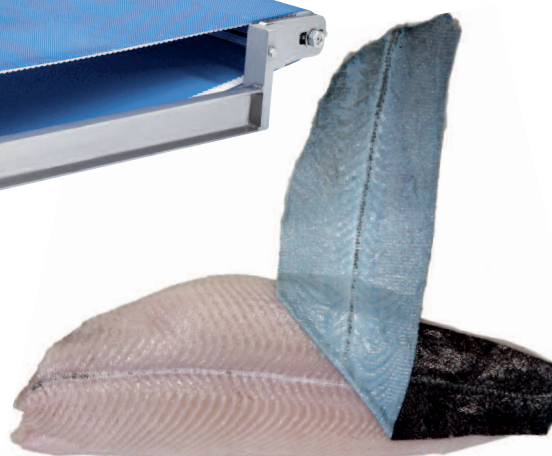
pollack



salmon



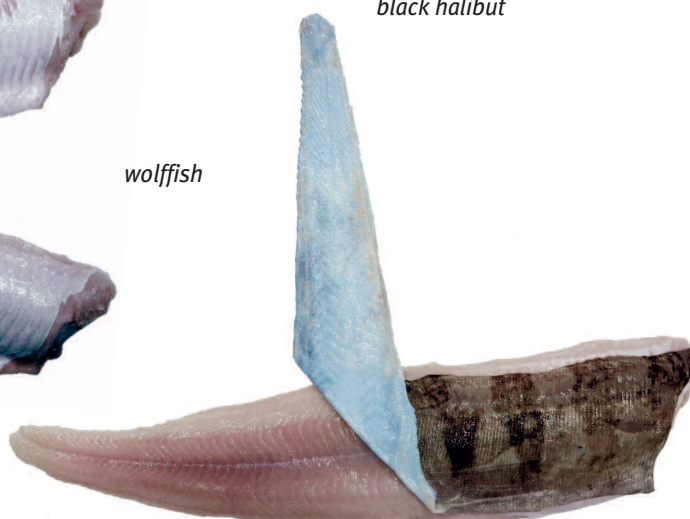
NOCK MULTI-DISC® upper pressure belt



black halibut



wolffish



Cortex CBF 496 HA

Features and application range

Automatic fish skinner with new, flexible NOCK MULTI-DISC® upper pressure belt and NOCK ACTIVE SKIN GRIPPER® ASG for particular gentle skinning of salmon head ahead and white fish, e.g. cod, pollack, haddock, wolffish, halibut, pike perch, and other white fish species. Prevents the V-shaped splitting of the tail.

- 2 methods of skinning:
 - pulling off the skin with a blunt blade (silver skinning)
 - skinning with sharp blade (stepless from thin to deep)
- cutting width: 430 mm
- cutting speed: 29 m/min
- feeding: with ASG
- virtually horizontal passage without flexion of the fillets
- passage without skinning possible



Cortex CBF 496 HA

Standard equipment

- infeed conveyor
- discharge conveyor
- new, flexible NOCK MULTI-DISC® upper pressure belt for particularly gentle and reliable skinning of salmon head ahead and white fish; without damage to the inner surface of the fillet
- special blade holder technology NOCK ACTIVE SKIN GRIPPER® ASG for skinning with a sharp blade, e.g. pollack, wolffish, catfish
- transport roller made of AISI 316L stainless steel with peripheral grooves and scraper comb (CF technology)
- integrated water cleaning unit for constant continuous operation with low water consumption
- blade gap infinitely adjustable
- infeed and discharge conveyor; can be removed from the machine within seconds without any tools
- NOCK POWER PLATES® for a machine construction which is easy to clean, with outstanding robustness and service friendliness
- NOCK EASY-FLOW® safety cover
- lockable castors
- stainless steel
- stainless steel bearings



Option:

- discharge conveyor for removed skin
- cleaning trolley / storage trolley

Technical data + equipment / Cortex CBF 496 HA

cutting width	430 mm
infeed conveyor speed	29 m/min
blade gap (stepless)	0 - 3 mm
max. throughput height	70 mm
skinning technology	CF technology with transport roller with peripheral grooves and scraper comb
NOCK ACTIVE SKIN GRIPPER® ASG	●
pressure unit	NOCK MULTI-DISC® upper pressure belt
skinning by pulling off with blunt blade (silver skinning)	●
skinning with a sharp blade	● ①
infeed conveyor	●
discharge conveyor	●
discharge conveyor for removed skin	○
apply length on the infeed conveyor	400 mm
overall dimension W x H x D	750 x 1220 x 1820 mm
weight	260 kg
motor performance	0.75 kW
electric connection	3 AC - 400 V - 50 Hz ② IEC 60309 16 A 6h
compressed air connection	5 < p < 10 bar
compressed air consumption	approx. 50 l/min (ambient pressure)
water connection	G 1/2 internal thread
water consumption	approx. 200 l/h
NOCK POWER PLATES®	●
NOCK EASY FLOW® safety cover	●
lockable castors	●
stainless steel	●
transport roller made of AISI 316L stainless steel	●
stainless steel bearings	●

● standard

○ optional

① with activated NOCK ACTIVE SKIN GRIPPER® ASG

② other voltages upon request



NOCK Maschinenbau GmbH
Industriestrasse 14
77948 Friesenheim
GERMANY

Tel.: +49 (0) 7821-92 38 98-0
Fax: +49 (0) 7821-92 38 98-18
E-mail: info@nock-gmbh.com
www.nock-gmbh.com