



Know-how in food processing!

POULTRY SKINNING MACHINE CORTEX CBP 619 TURKEY



application range

poultry skinning machine with high capacity, for automatic skinning of **fresh turkey parts** with and without bones

features

- pressure unit designed for particularly **high products**
- Dynamic stainless steel cleaning roller and **NOCK Air-Jet compressed air cleaning system** keep the transport roller permanently clean during operation
- proven **NOCK hygienic design**

POULTRY SKINNING MACHINE CORTEX CBP 619 TURKEY

STANDARD EQUIPMENT

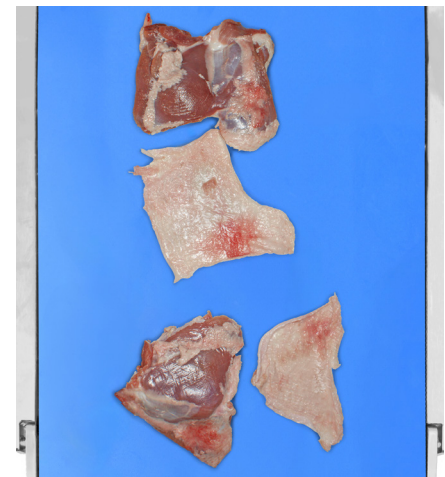
- infeed conveyor
- discharge conveyor, adjustable in height
- proven **NOCK hygienic design** with large smooth, easy to clean surfaces
- compact casing with sloping tops and underframe open on all four sides
- **for easy cleaning of the machine**, the blade holder can be placed on a holder in an offset position
- blade holder suspension spring loaded for perfect skinning results
- special geometry of the **pressure system** and spring identification - for **dynamic adaption** to variously high pieces and continual **perfect results**
- pressure unit adjustable in height
- **pressure unit** designed for **particularly high products**
- Dynamic stainless steel cleaning roller and **NOCK Air-Jet compressed air cleaning system** ensure a permanently clean transport roller during ongoing operation - for reliable gripping, smooth work and great operational hygiene
- **NOCK POWER PLATES®** for particular robustness and service friendliness
- **NOCK EASY-FLOW® safety cover** in the machine infeed for reliable product flow and better hygiene during processing, with gas pressure spring for easy handling
- **protective cover in the machine outlet for increased safety during operation**
- conveyors can be removed within seconds without any tools

OPTIONS

- discharge conveyor for removed skin
- or lateral skin removal belt with separate drive
- **monolithic conveyor belts** (without fabric)



front view cover open



skinned turkey upper leg

TECHNICAL DATA

Cortex CBP 619 TURKEY

cutting width	600 mm
cutting speed	26 m/min
maximum throughput height (1)	120 mm
apply length on infeed conveyor	520 mm
overall dimension W x H x D	965 x 1370 x 2260 mm
weight	330 kg
motor performance	0.75 kW
electrical connection (2)	3 L+PE - 400 V - 50 Hz IEC 60309 16 A 6h (plug)
compressed air connection	5 < p < 10 bar plug connection DN 7.2

(1) other heights upon request, (2) other voltages upon request

Subject to technical changes

issued: 03/2026

NOCK Maschinenbau GmbH
Industriestrasse 14 | 77948 Friesenheim
GERMANY

Telefon: +49 7821 923898 0
Telefax: +49 7821 923898 18
E-Mail: info@nock-gmbh.com



www.nock-gmbh.com



Know-how in food processing!